

Dear Math Department Chairperson or Mathematics Team Coach:

John Warner Middle School is hosting a Math League (ML) tournament on **Saturday, January 25, 2025**. This contest is being directed by Kathleen Casper and Jennifer Sirois and will be held at **John Warner Middle School in Columbia, MO**. The address and map to the school are attached to this letter.

Your school is invited to challenge its students to participate in this exciting event. Tests will be provided by ML and a complete description of the event is available at the website listed below. The registration fee is \$10.00 per student, and all students are encouraged to compete in any or all events. Cash or check made out to MCTM or online payment by credit card or paypal through a sponsor's confirmation email or by calling Sonya Land at 314-322-3757.

Please register your students at <http://mathleague.org/register0.php?event=12232> If your school is not listed in the dropdown menu, you will need to fill out a mathleague membership form at <https://mathleague.org/membership.php>.

This tournament is part of a series of contests sponsored by ML across the United States, and MCTM in Missouri. If your child has qualified (listed under the Qualifiers to the Next Level tab), he/she will be attending the MCTM State Middle School Contest being held on Saturday, March 1, 2025, at Ladue Middle School.

All information about state can be found at https://docs.google.com/document/d/1gJsQPwe_Dt5NeTeKguTzofDIRLv4wOq3sABluCZrsjY/edit or also on the MCTM webpage at <https://moctm.org/mctm-math-contest/mctm-middle-school-math-contest.html>

The schedule for January 25, 2025 Competition will be approximately as follows:

8:25 - 8:45 Registration in the Cafeteria of JWMS
8:20 - 8:30 Coaches/ Proctors meeting
9:00 – 9:50 Sprint Event
10:00 – 10:30 Target Event
10:30 – 10:45 Restroom Break
10:45 – 11:05 Team Event
11:30 - 12:00 Awards

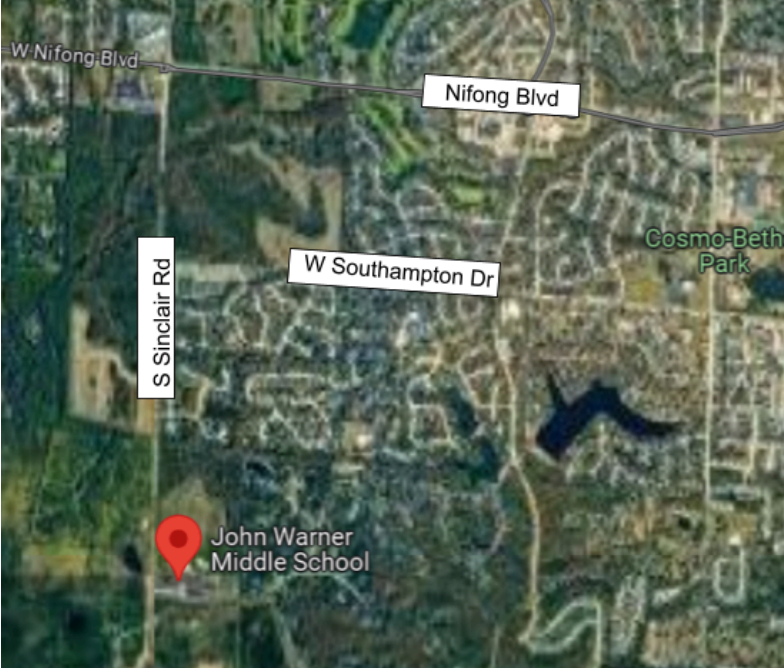
Each school is required to send at least one coach/sponsor to assist in scoring or proctoring while the students are testing. Schools bringing more than 18 students should bring one sponsor for each 18 students. Please let us know the names of coach/sponsors in advance.

The entry deadline for the competition on January 25th is on January 22, 2025. Entry fees can be paid on the day of the contest and small changes can be made in the student information on that day. However, it is requested that most names and grades of participants be entered by January 22 at the link above. (Feel free to e-mail changes throughout the week prior to the contest.)

Please note that the contest will be given on paper, so students will not need their devices. If you have any questions, please e-mail Kathleen Casper or Jennifer Sirois. We hope to see you on January 25th!

Kathleen Casper kcasper@cpsk12.org
Jennifer Sirois jsirois@cpsk12.org
JWMS Math Teachers and Math Team Coaches

John Warner Middle School
5550 S Sinclair Rd, Columbia, MO 65203



Enter here

Event Descriptions

Sprint Event: This is a 40-minute test consisting of thirty questions. Students may not use calculators on this test. Answers must be fully simplified and, where appropriate, given in the format asked for in the question. One point is awarded for each correct answer, with no penalty for questions that are skipped or answered incorrectly.

Target Event: Four pairs of problems are administered, and students have 6 minutes to complete each pair. Answers must be fully simplified and, where appropriate, given in the format asked for in the question. Students may use [any calculator allowed for use on the SAT](#). One point is awarded for each correct answer, with no penalty for questions that are skipped or answered incorrectly.

Team Event: One to four team members of various or same grade levels from the same school work together for 20 minutes to answer ten questions. Answers must be fully simplified and, where appropriate, given in the format asked for in the question. Students may use [any calculator allowed for use on the SAT](#). One point is awarded for each correct answer, with no penalty for questions that are skipped or answered incorrectly.

After awards today, all results will be posted online at <https://mathleague.org/results/middleschool/> .

If your child has qualified (listed under the Qualifiers to the Next Level tab), he/she will be attending the MCTM State Middle School Contest being held on **Saturday, March 1, 2025**, at Ladue Middle School.

[State Middle Contest Information and Registration Link](#)

Strategies to Share with Sponsors and Students

- Team Formation: Students should be organized into teams of 1-4 students for the team event prior to the day of the contest. Teams can be made up of 1-4 students of mixed or same grade levels FROM THE SAME SCHOOL; we encourage mixed grade level teams. Every student attending will take the team test.
- For purposes of awards, a school's overall score (the "sweepstakes" score) is obtained by adding the top 4 individual point totals from the school, dividing by 4, and adding twice the school's top score on the team round. A maximum team total would be 66 points (46 points if the team had four members with perfect individual scores, 20 for the team test). Ties are broken by comparing team round scores (weighted by item analysis). If teams are still tied, the fourth highest individual scores that contributed to the tied sweepstakes scores will be compared (highest ranking score wins the tie), after which the third highest and then second highest individual scores will be compared if necessary.
- During the restroom break (approximately 10:30-10:45), students are expected to remain in the area near their testing room. Restrooms and a water fountain will be nearby. Students may bring and eat a small snack ONLY during the break between testing.

- No student will be allowed to enter a testing session after a test has begun. Students are expected to remain in their assigned area and to refrain from talking throughout the individual testing sessions. Any student making disruptive noises may be asked to leave the room. During the team event, students should talk quietly with their teammates so that they do not inadvertently share answers with other teams.
- Students should bring at least 2 sharpened pencils and a calculator. [Any calculator allowed on the SAT](#) may be used. Calculators are allowed ONLY on the Target and Team Events, NOT the Spring Event. A student must furnish his or her own calculator. Students may NOT use cell phones or be wearing smartwatches during the contest. These need to be put away at all times students are taking a test. **STUDENTS MAY NOT USE CELL PHONES AS CALCULATORS OR TRANSLATORS.**
- Students may not use any dictionaries or other reference materials. If any student's proficiency in the language(s) the tests are offered in is so severely limited as to preclude participation in mathleague.org contests, that student's coach may make arrangements with mathleague.org to provide a written translation of the tests, so long as the translation can be accomplished in a timely and secure fashion, and at no cost to mathleague.org. Any such translation must be approved by mathleague.org before use at a contest.
 - Only answers written in the proper spaces will be graded. Any blank space on the test may be used for any work to help you solve the problem. Scratch paper will be provided for the Sprint and Team events.
- Instruct students to not be concerned with writing units unless the question prompts them to do so.
- Fractional numbers must be expressed in simplest (lowest) terms or as an equivalent decimal fraction, unless a ratio is requested. For example, 0.33 is not equivalent to $\frac{1}{3}$ and would be counted incorrect if the answer were $\frac{1}{3}$. All improper fractions should be left as improper fractions.
- Each participant will receive a Ribbon of Participation.
 - The students earning the five highest scores in Target and Sprint at each grade level will be recognized. Also, the five highest individual overall scores in each grade level will be recognized. The top five Sweepstakes teams will also be recognized.
 - For the Regional and State Math Competitions, there are two different ways that ties are broken for awards. If two students tied with the same score in an event (e.g. Target with a score of 3), their Borda scores were compared to see which student answered the more difficult questions. The student with the lower Borda score would place higher than the other. To break absolute ties in Sprint or Target at either the Middle level, we looked at the students' opposing event scores. Say that Students A, B and C are all tied with a score of 3 on Target, all with the same Borda scores indicating they answered the same 3 questions correct. We then look at their Sprint scores. Say Student A has a Sprint score of 6, Student B has a sprint score of 5, and Student C has a sprint score of 4. Then to break the tie on Target, Student A would be first, Student B would be second, and Student C would be third.